

MAKE YOUR RESERVATION TODAY!

Reservations are accepted up to 12 months in advance for Active Duty, up to 6 months in advance for all others, with an advanced deposit equal to one night's stay. Please note, cottages require a two-night minimum stay, while some holiday periods may require up to a four-night minimum stay. Payment in full is due for all nights reserved at check-in. No refunds will be issued for early departure.

Check-in/Check-out

Check-in for all resort accommodations, except the RV park, begins at 3 pm. RV check-in begins at 1 pm. Please call ahead if checking in after 6 pm. Check-out time is at 11 am.

Cancellations

A notice of cancellation must be received at least 14 days prior to arrival date or a fee equal to the first night's stay will be assessed.

Spouses or Guests

Please register all guests with the Front Desk. Registered patrons are responsible for the actions of their guests. There is no extra charge for guests, but the number of occupants per style of accommodation is governed for safety and fire codes, based on square footage.

Additional Fees

- Cribs, roll-away beds (available in cottages only), folding tables, folding chairs, and additional towel sets are available at the Front Desk for a small fee.
- Tents at cottages and RV sites may assess a \$5 per night fee.
- Pet and/or Cleaning Fees may also apply.

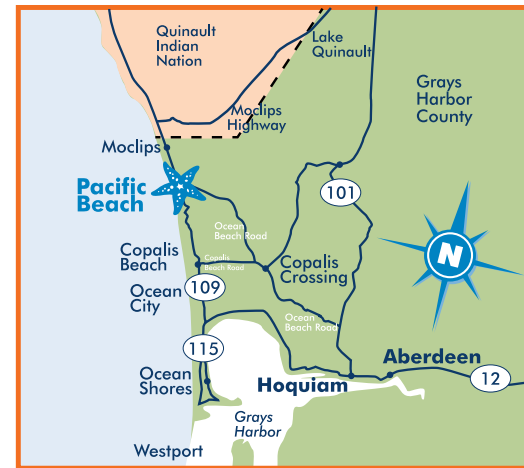
Special Discounts

Special Discounts are offered throughout the year and are subject to change. Please inquire about any promotions that may be available when making your reservation.



Please Note...

- Resort indoor facilities are 100% non-smoking.
- There are no elevators in the hotel, however ADA hotel rooms and cottages are available. Please request an ADA room when making your reservation.
- Pets are permitted in the King Suites and Cottages. Please notify the Front Desk of all pets, vehicles and additional guests.



DIRECTIONS TO PACIFIC BEACH:

Pacific Beach is approximately 150 miles southwest of Seattle, on Washington's scenic Pacific Coast.

Interstate 5 North or South

Take the Aberdeen/Ocean Beaches exit, number 104, and follow this through Aberdeen and Hoquiam. Follow directions below from Hoquiam to Pacific Beach.

West Sound Locations (Highway 3) South

Follow Highway 3 through Shelton to Highway 101 South. Follow Highway 101 South, approximately 3.1 miles, to Highway 108/McCleary/Aberdeen exit. Turn right and follow Highway 108 through McCleary. Approximately one mile past McCleary, turn left to Highway 8 and turn right (west). Highway 8 turns into US Highway 12 West. Follow US Highway 12 West through Aberdeen and Hoquiam (will become Highway 101 North).

From Hoquiam

Approximately four miles out of Hoquiam on Highway 101 North, turn left on Ocean Beach Road. Stay on Ocean Beach Road through the town of Copalis Crossing. Several miles later, you will arrive in the town of Pacific Beach! Continue straight at the four-way stop through the town of Pacific Beach and up the road parallel to the ocean. You will see the Resort on the left side.



Stay • Relax • Play • AT THE BEACH!



**NEW
RESERVATION LINE!
1-877-NAVY-BED**

OPEN ALL YEAR-ROUND!

108 FIRST ST N, PO BOX 335, PACIFIC BEACH, WA 98571



**FOR MORE INFO
SCAN HERE OR CALL
888.463.6697**



Where business and pleasure collide

Welcome...

...to Pacific Beach Resort & Recreation Center!

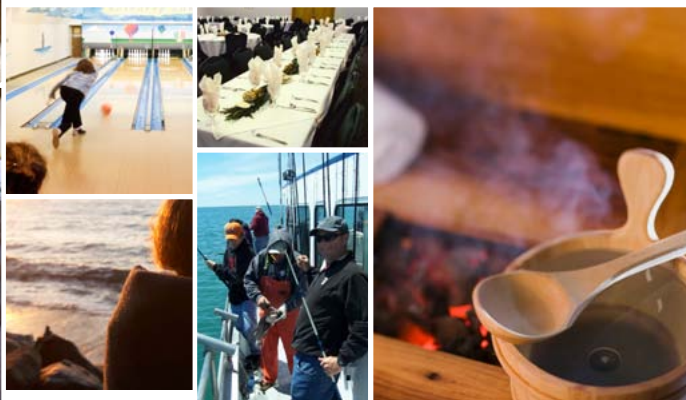
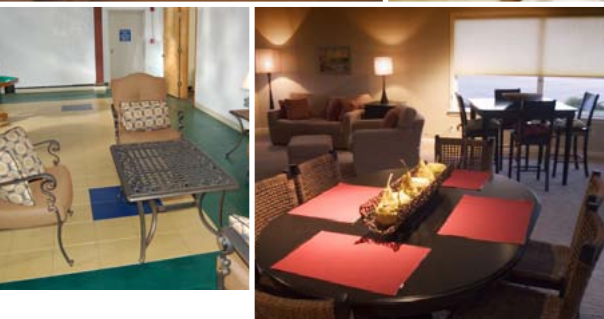
We are proud to be the only full-service resort specifically for military service members, federal employees and their families on the Washington or Oregon coast. We are committed to offering you the finest quality accommodations and services during your stay. Regardless of the reason for your visit, our number-one priority is your utmost satisfaction. There is an abundance of attractions and events in Grays Harbor County as well as up and down the Washington coast. The Pacific Beach Resort & Recreation Center continues to grow and improve thanks to your loyalty. It is our honor to serve those who have given so much to our nation.

AMENITIES

- Beachcomber Gifts & Espresso Bar
- Private Bowling Alley
- The Rec-Zone Family Play Area & Game Room
- Cable TV & DVD player
- Cardio Room
- Sauna & Hot Tub
- Private Theater & Movie Rentals
- Business Center with Wi-Fi
- Two Playgrounds
- Horseshoe Pit & NCAA Sand Volleyball Court
- Laundromat
- Clam-cleaning Station
- Whale-watching Tower
- Windjammer Restaurant & Lounge
- Meeting & Banquet Facilities with Conference & Catering Packages
- Cable TV in RV Park (during peak season)

THINGS TO DO IN THE AREA

- Walk or drive on the beach and explore
- Olympic National Forest
- Forks & Twilight Tours
- Hoquiam Castle
- Bird Watching
- Whale Watching
- Fishing & Clamming
- Quinault Beach Resort & Casino
- Ocean Shores Golf Course
- Horseback Riding



RATES LAST REVISION MAY 2012 - RATES ARE SUBJECT TO CHANGE WITHOUT NOTICE. CHECK WWW.NAVYLIFEPNW.COM OR CALL 1-888-463-6697 TO CONFIRM RATES.

Hotel Rooms All guest rooms are equipped with a TV, DVD/VCR, small microwave, refrigerator, coffee maker and hair dryer. Daily housekeeping service is provided for all guest rooms.

Standard Located on the first and second floors with a queen bed.

| Active Duty E1-E6 | | Active Duty E7+ Retired • Reserve | | DoD Civilian Current • Retired | |
|-------------------|----------|-----------------------------------|----------|--------------------------------|----------|
| Peak | Off-Peak | Peak | Off-Peak | Peak | Off-Peak |
| \$50 | \$35 | \$55 | \$40 | \$60 | \$45 |

Double Located on the first floor, with a queen and twin bed.

| Peak | Off-Peak | Peak | Off-Peak | Peak | Off-Peak |
|------|----------|------|----------|------|----------|
| \$55 | \$40 | \$60 | \$45 | \$65 | \$50 |

Family Hotel Rooms Located on the second floor, with two queen beds.

| Peak | Off-Peak | Peak | Off-Peak | Peak | Off-Peak |
|------|----------|------|----------|------|----------|
| \$70 | \$50 | \$75 | \$55 | \$80 | \$60 |

King Suites Located in their own wing with a gas fireplace and seating area. Pets allowed in King Suites, see Front Desk for more details.

| Peak | Off-Peak | Peak | Off-Peak | Peak | Off-Peak |
|------|----------|------|----------|-------|----------|
| \$90 | \$60 | \$95 | \$65 | \$100 | \$70 |

Jacuzzi Suites* Located on the third floor, with a king bed and sofa sleeper. Accommodates up to four people for an additional fee.

| Peak | Off-Peak | Peak | Off-Peak | Peak | Off-Peak |
|------|----------|-------|----------|-------|----------|
| \$95 | \$65 | \$100 | \$70 | \$105 | \$75 |

*Rates are based on double occupancy. Accommodates up to four people for an additional fee.

RV Spaces Open year-round with 30-amp power, water and a picnic table. There is a limit of two vehicles per site. Site number requests cannot be accommodated. Pets are allowed at RV lots, please see Front Desk for more details.

| | Active Duty E1-E6 | | Active Duty E7+ Retired • Reserve | | DoD Civilian Current • Retired | |
|--------|-------------------|----------|-----------------------------------|----------|--------------------------------|----------|
| | Peak | Off-Peak | Peak | Off-Peak | Peak | Off-Peak |
| Daily | \$18 | \$12 | \$20 | \$15 | \$25 | \$20 |
| Weekly | \$100 | | \$120 | | \$140 | |

Cottages All cottages have a living room with a TV, DVD/VCR. Kitchen features basic cooking equipment and place settings. Beds have pillows, blanket, bedspread and linen. Each cottage is limited to four cars. Please note there is no RV parking or parking on the grass. Requests for specific cottages cannot be accommodated. Pets are allowed in cottages, see Front Desk for more details.

3-Bedroom Perfect for 4-6 people; 10 guests maximum.

| | Active Duty E1-E6 | | Active Duty E7+ Retired • Reserve | | DoD Civilian Current • Retired | |
|------------|-------------------|----------|-----------------------------------|----------|--------------------------------|----------|
| | Peak | Off-Peak | Peak | Off-Peak | Peak | Off-Peak |
| Ocean View | \$150 | \$110 | \$165 | \$125 | \$195 | \$145 |

4-Bedroom Perfect for 6-8 people; 10 guests maximum.

| | Peak | Off-Peak | Peak | Off-Peak | Peak | Off-Peak |
|------------|-------|----------|-------|----------|-------|----------|
| East | \$125 | \$90 | \$140 | \$100 | \$170 | \$120 |
| Ocean View | \$160 | \$120 | \$175 | \$135 | \$205 | \$155 |

5-Bedroom Perfect for 8-10 people; 12 guests maximum.

| | Peak | Off-Peak | Peak | Off-Peak | Peak | Off-Peak |
|------------|-------|----------|-------|----------|-------|----------|
| East | \$145 | \$100 | \$160 | \$110 | \$190 | \$140 |
| Ocean View | \$185 | \$135 | \$200 | \$150 | \$220 | \$165 |

Camping Sites Each space can accommodate two tents or vehicles and up to eight people. Access to showers, rest rooms, picnic tables and a public fire pit beside campground (not at each site). All resort amenities are open to campers.

| | Active Duty E1-E6 | | Active Duty E7+ Retired • Reserve | | DoD Civilian Current • Retired | |
|--|-------------------|----------|-----------------------------------|----------|--------------------------------|----------|
| | Peak | Off-Peak | Peak | Off-Peak | Peak | Off-Peak |
| | \$10 | \$8 | \$12 | \$9 | \$14 | \$10 |

Group Camping Sites Space for eight tents or vehicles, up to 25 people.

| Peak | Off-Peak | Peak | Off-Peak | Peak | Off-Peak |
|------|----------|------|----------|------|----------|
| \$50 | \$35 | \$55 | \$40 | \$75 | \$50 |

OFF PEAK period is OCT. 1 - MAY 1, SUN.-THURS., excluding Holidays and School Breaks.
Active Duty E7+ Includes: E7, E8, E9, O1-O10, W1-W4