



Welcome ...



... to Navy Getaways Pacific Beach! Open year-round, Pacific Beach is the perfect place to stay, play and relax in Washington for military-connected personnel and their families. We are located on the Pacific Coast, 15 miles north of Ocean Shores, and offer fully-furnished 3-, 4-, and 5-bedroom cottages lining the ocean bluff, hotel rooms and suites, RV park and campground.

What's New ...

We are working on another renovation project to enhance your stay. This latest transformation includes 13 cottages renovated with fresh interior paint, new flooring and updated furniture.



Planning ...

... a family vacation or a weekend getaway? Navy Getaways Pacific Beach provides exciting recreational experiences for Active Duty, retirees, NAF or DoD civilians and sponsored guests. We are the ideal place to play, rest, relax and recharge. From family reunions, beachcombing, hiking or simply unwinding, Navy Getaways caters to you and your family.

Things To Do ...

- ... in the area:
- Walk or drive on the beach and explore
 - Olympic National Forest
 - Bird Watching
 - Whale Watching
 - Fishing and Clamming
 - Quinault Beach Resort & Casino
 - Ocean Shores including Horseback Riding



Special Events...

...year-round!
From our new Oktoberfest & Color Run to our renowned Glass Float Frenzy days, you'll find fun seasonal activities that will make your trip to Pacific Beach a memorable one.

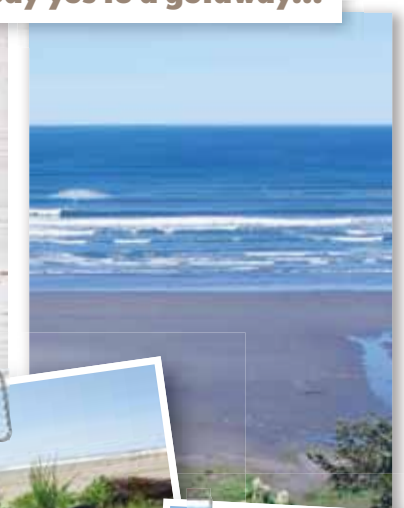
Sign up for our e-newsletter or visit pacbeach.navalypnw.com to see our latest promotions and special events.

Rental Center

Your vacation is calling and we've got you completely covered with a wide range of equipment rental options for biking, beach activities, camping, clam-digging, hiking and more. Call for current rates and availability.



Say yes to a getaway...



NAVYLIFEPNW.COM



FRONT DESK • RESERVATIONS
360-276-4414
ONLINE RESERVATIONS AND SUPPORT
WWW.NAVYGETAWAYS.COM • 877-NAVY-BED



Book Your Stay Today!

Reservations are accepted up to 14 months in advance for Active Duty and up to 12 months in advance for all others. Reservations are on a first-come, first-served basis, regardless of rate or rank, so book your stay today!

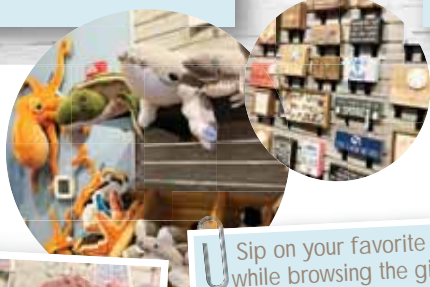
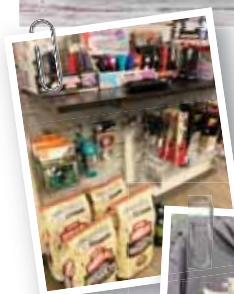
- 3-, 4-, 5-Bedroom Cottages
- Standard, Family Hotel Rooms
- King Suites
- Junior Suites
- RV Spaces
- Camping Sites

ADA and pet-friendly accommodations available. Please call Front Desk.

Please note, cottages require a two-night minimum stay, while some holiday periods may require up to a three-night minimum stay. Payment in full is due for all nights reserved at check-in. No refunds will be issued for early departure.

Featured Amenities

- Pac Beach Market & Café
- Bowling Alley
- Lounge (limited hours off-season)
- Limited FREE Wi-Fi
- Movie Room
- FREE DVD Check-out
- PlayStation and Xbox Rental
- Giant Chess Set
- Basketball Court,
- Sand Volleyball Court
- Horseshoe Pit
- Cornhole
- Tetherball
- Playgrounds
- TOLF Course
- Outdoor Equipment Rentals
- Bike Rentals
- Laundromat
- Clam-Digging Gear Rentals
- Clam-Cleaning Station
- Whale-Watching Tower
- Fire Ring



Sip on your favorite espresso beverage, while browsing the gift shop for a special souvenir or comfy sweatshirt. The Pac Beach Market & Café has all of the essentials needed for your getaway: Order from our Café menu, enjoy a sweet treat, pick up travel necessities or select from our grocery items to prepare your next meal in the comfort of your room.

Lodging Rates

One rate for all status!

Active Duty, Retirees, Reservists, DoD Civilians/ Federal Employees

Rates are subject to change without notice. Check pacbeach.navylife.pnw.com or call 877-NAVY-BED.

OFF PEAK period is Oct. 1-May 1, excluding holidays and school breaks.

1 pet \$25 per night/2 pets \$35 per night. 2 pet max.

See Pet Policy at <http://pacbeach.navylife.pnw.com> or call for details.

*There are no elevators in the hotel. If you need ADA accommodations, call the Front Desk and inform the reservationist when booking reservation(s). Requests for hotel floor are available.

Hotel Rooms

All guest rooms are equipped with a TV, DVD player, small microwave, refrigerator, Keurig® and hair dryer. Daily housekeeping service is provided for all guest rooms.

	Peak	Off-Peak
Standard Hotel	\$70	\$50

Located on the first and second* floor, with a single queen bed.

Hotel Family	\$90	\$60
---------------------	------	------

Located on the second* floor, with two queen beds.

Hotel Suites

Pets allowed in select King Suites, please call Front Desk for more details.

	Peak	Off-Peak
Junior Suite	\$125	\$85

Located on the third* floor, with luxury walk-in shower and a king bed. Accommodates up to two people.

King Suite	\$125	\$85
-------------------	-------	------

(pet-friendly available)

Located in their own wing, with a gas fireplace and seating area. King bed in separate bedroom.

RV Sites

Open year-round with 30-amp power, water and a picnic table. Site number requests cannot be accommodated.

	Peak	Off-Peak
RV Site (pet-friendly)	\$18	\$18

Campsites

Each site can accommodate up to two vehicles per space. Includes a picnic table and fire ring. Showers and restrooms located at RV Park. All facility amenities are open to campers.

	Peak	Off-Peak
Single Tent Site	\$10	\$10

2 tents, up to 8 people

Group Tent Site	\$60	\$45
------------------------	------	------

8 tents, up to 25 people

Cottages

All cottages have a living room with a TV and DVD player, a full kitchen with basic amenities and dining room. All bedrooms are equipped with bedding.

Please note: Each cottage is limited to four cars. There is no RV parking or parking on the grass. Requests for specific cottages cannot be accommodated. Pets are allowed in select cottages, call Front Desk for details.

	Peak	Off-Peak
--	------	----------

3 Bedroom

Perfect for 4-6 people, 6 guests max.

ADA pet-friendly	\$220	\$110
-------------------------	-------	-------

ADA Premium pet-friendly	\$220	\$115
---------------------------------	-------	-------

4 Bedroom

Perfect for 6-8 people, 10 guests max.

East Side pet-friendly	\$175	\$100
-------------------------------	-------	-------

Ocean View pet-friendly	\$195	\$105
--------------------------------	-------	-------

Lower Oceanfront	\$250	\$150
-------------------------	-------	-------

Luxury Lower Oceanfront	\$250	\$150
--------------------------------	-------	-------

Upper Oceanfront	\$230	\$115
-------------------------	-------	-------

pet-friendly available

5 Bedroom

Perfect for 8-10 people, 10 guests max.

East Side	\$195	\$105
------------------	-------	-------

Oceanfront	\$240	\$120
-------------------	-------	-------